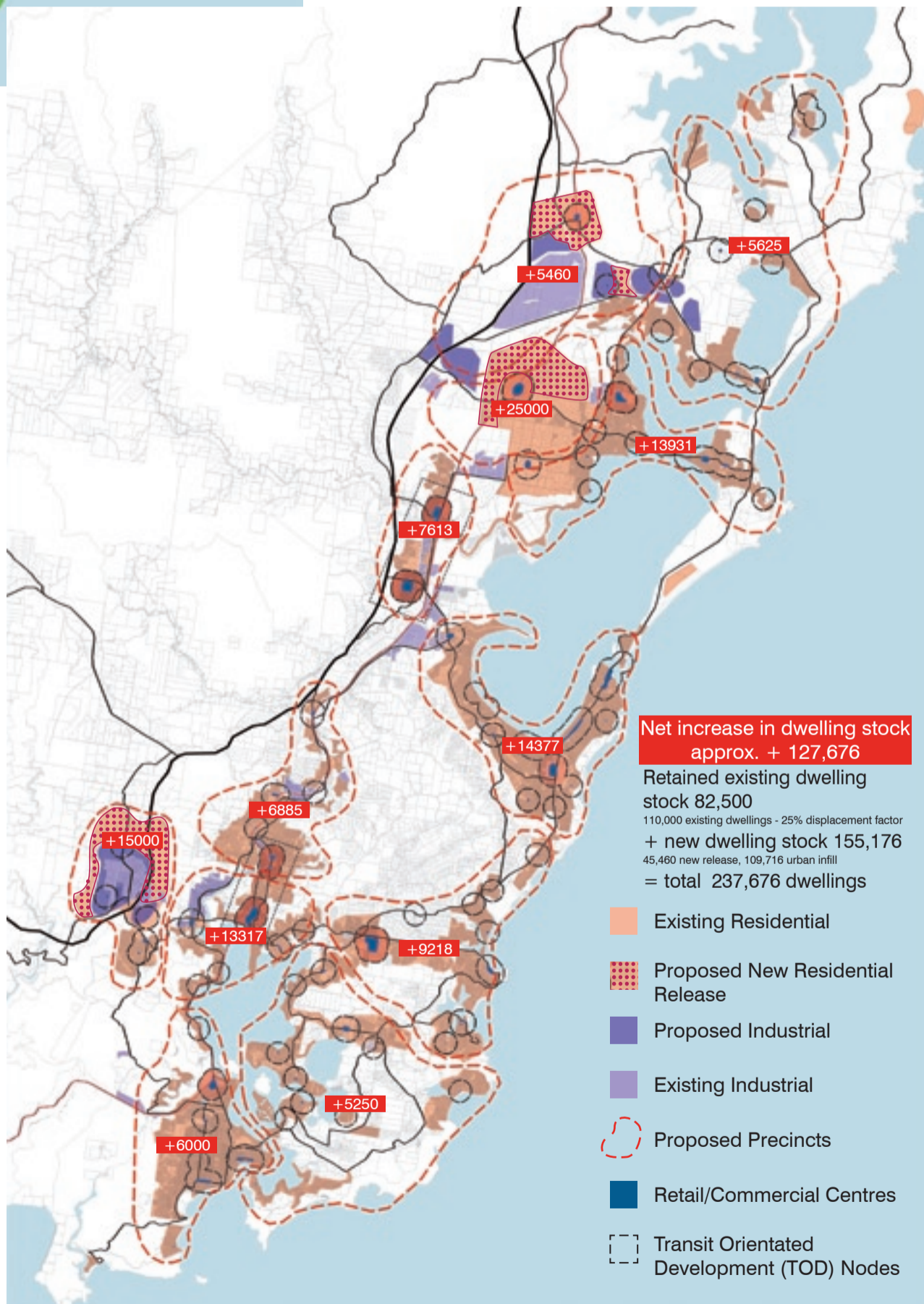


Environment and Open Space

- Existing Public Open Space
- Existing Private Conservation Lands
- Proposed Open Space

ESD Principles

- Balance increased urban footprint with appropriate urban renewal.
- Linking existing fragmented open space to create viable habitats.
- Creation of compensatory habitat as part of an urban development strategy supported by funding and implementation plan.
- Extend WSUD principles to existing urban areas as part of a comprehensive urban renewal strategy including more efficient water reuse.
- Energy smart design for all new development including urban renewal.



Net increase in dwelling stock approx. + 127,676

Retained existing dwelling stock 82,500
 110,000 existing dwellings - 25% displacement factor
 + new dwelling stock 155,176
 45,460 new release, 109,716 urban infill
 = total 237,676 dwellings

- Existing Residential
- Proposed New Residential Release
- Proposed Industrial
- Existing Industrial
- Proposed Precincts
- Retail/Commercial Centres
- Transit Orientated Development (TOD) Nodes

Housing and Employment

